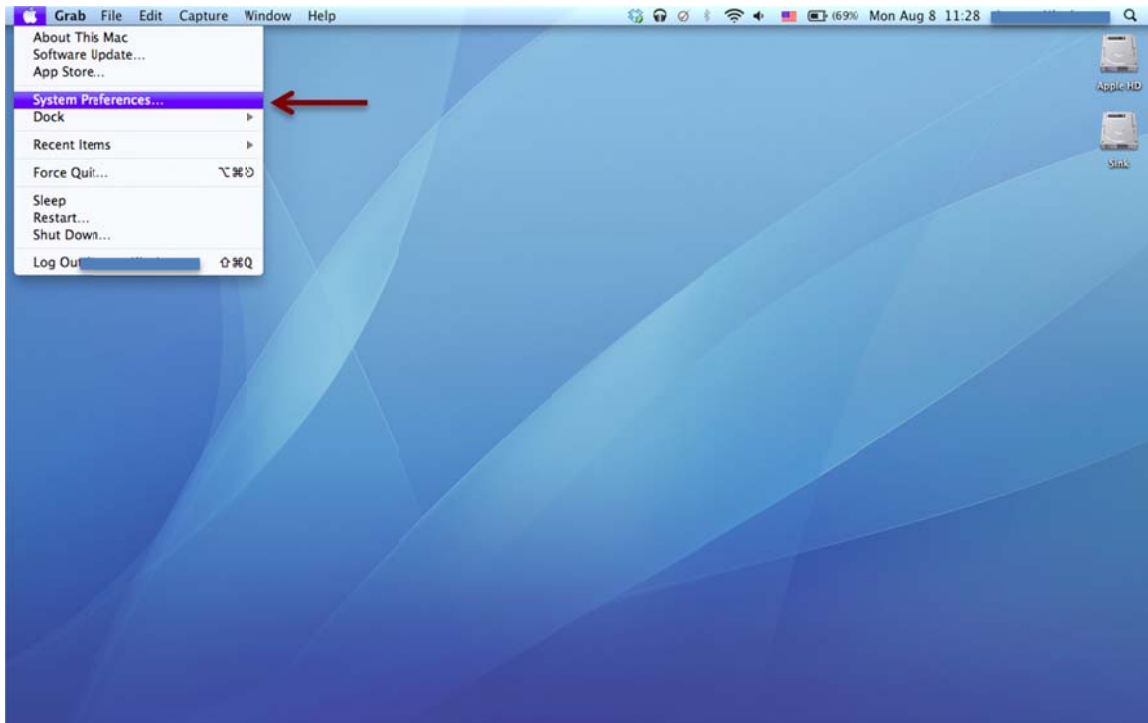
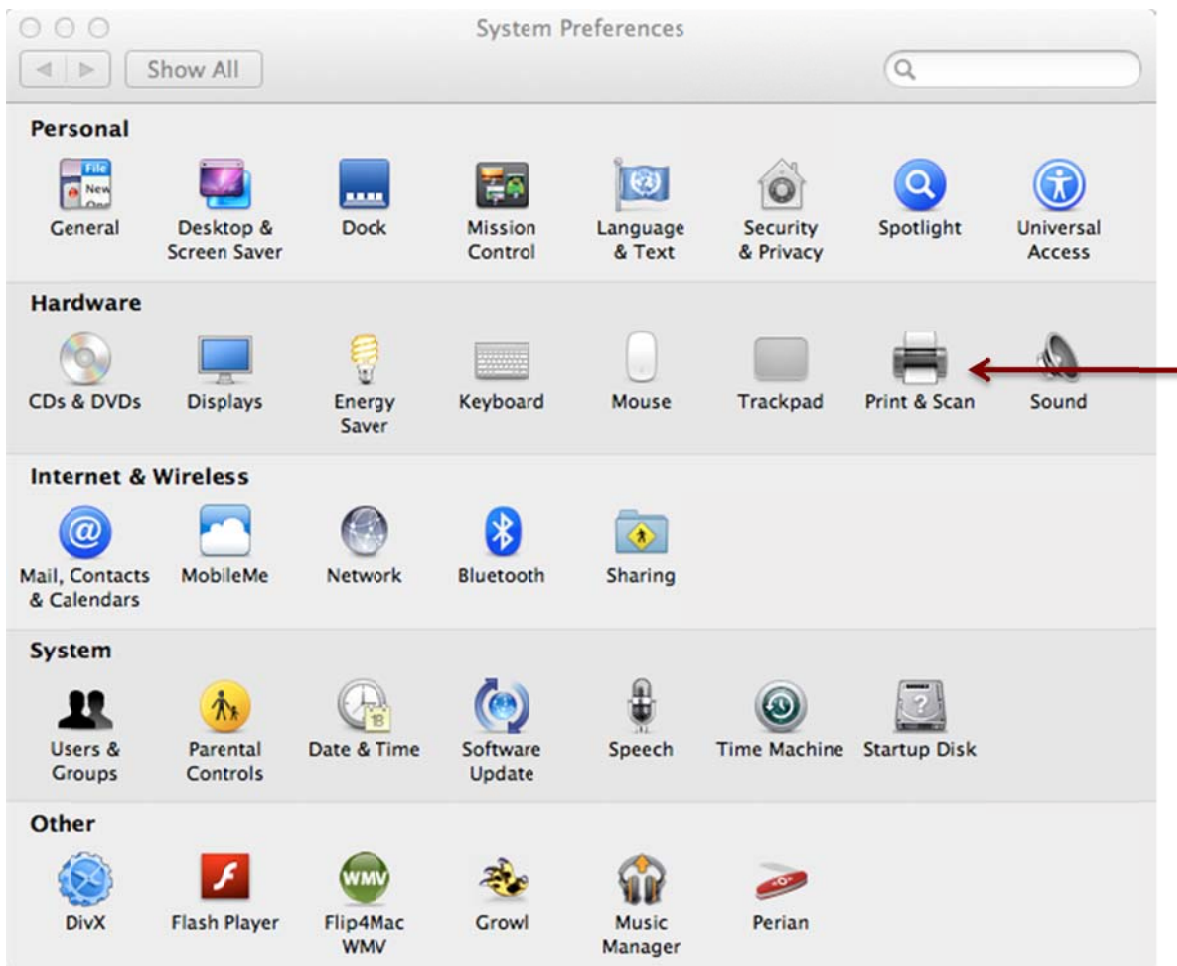


Wireless Printing Mac OS X

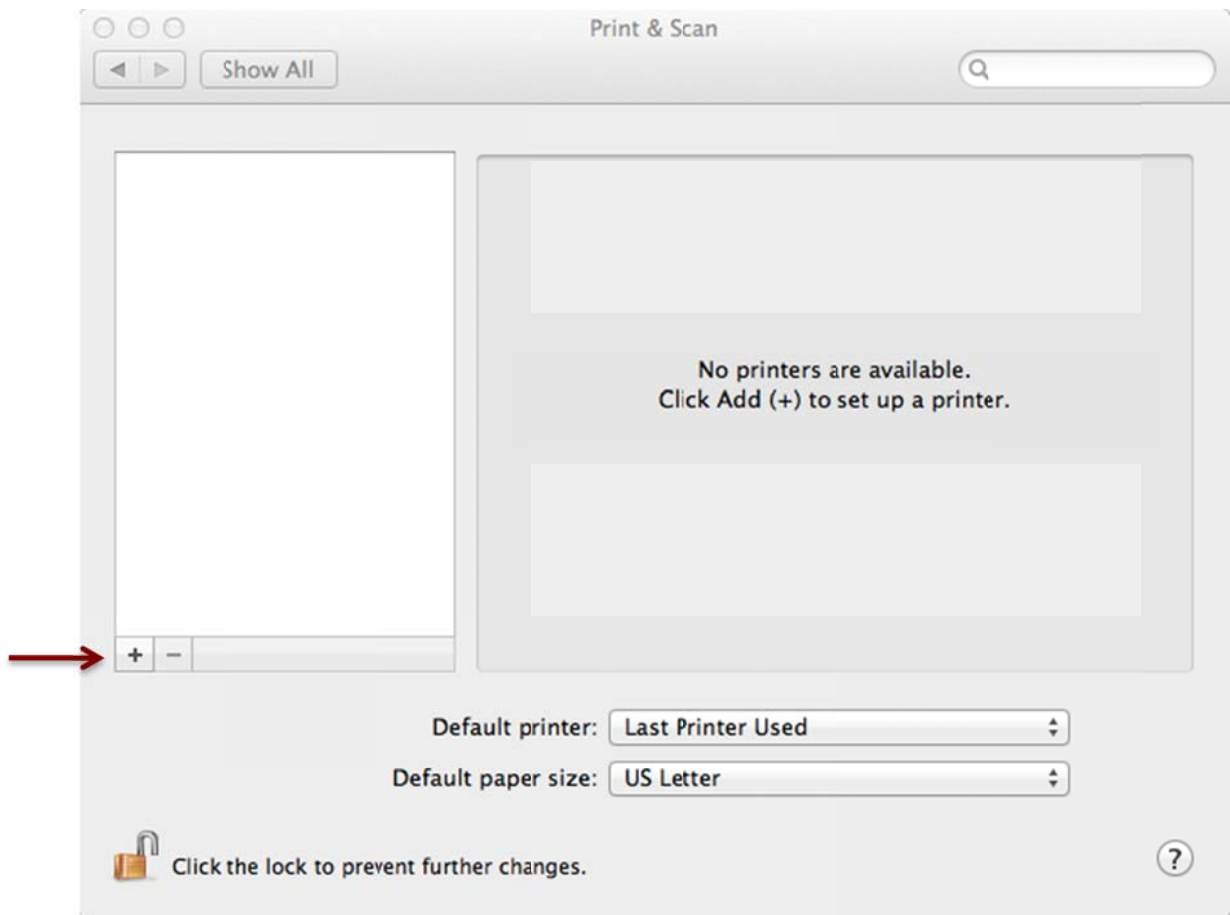
1. Click the Apple button in the upper left corner, then click "System Preferences".



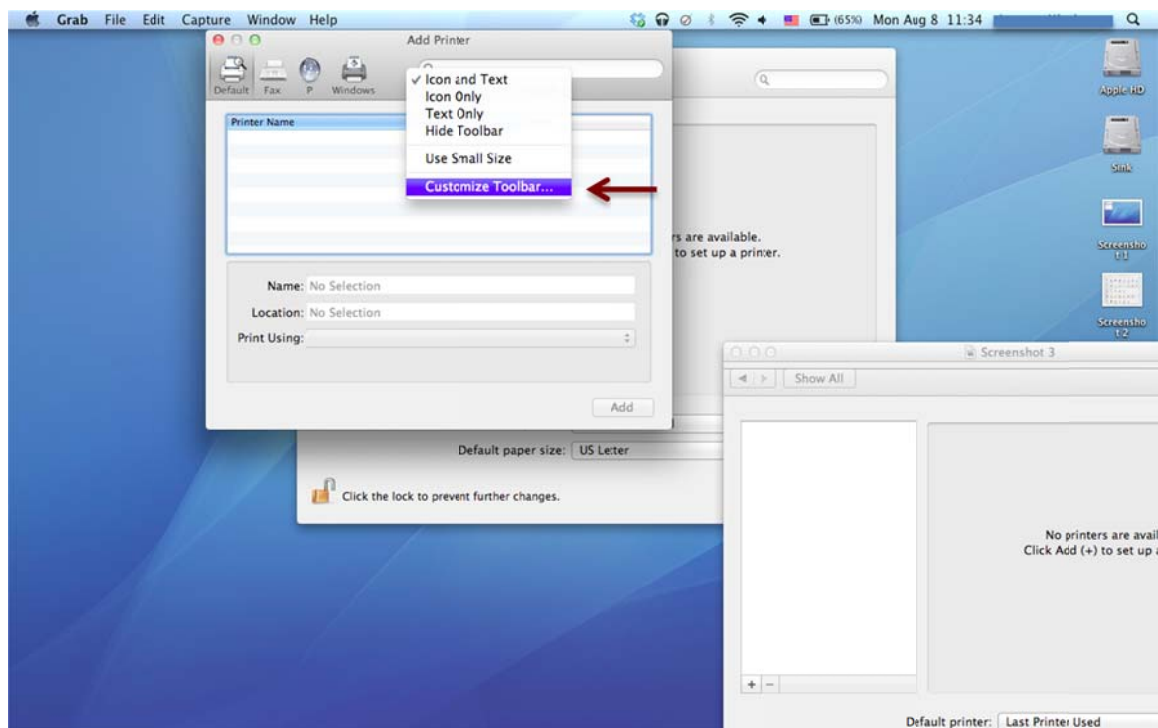
2. In the System Preferences window select "Print & Scan".



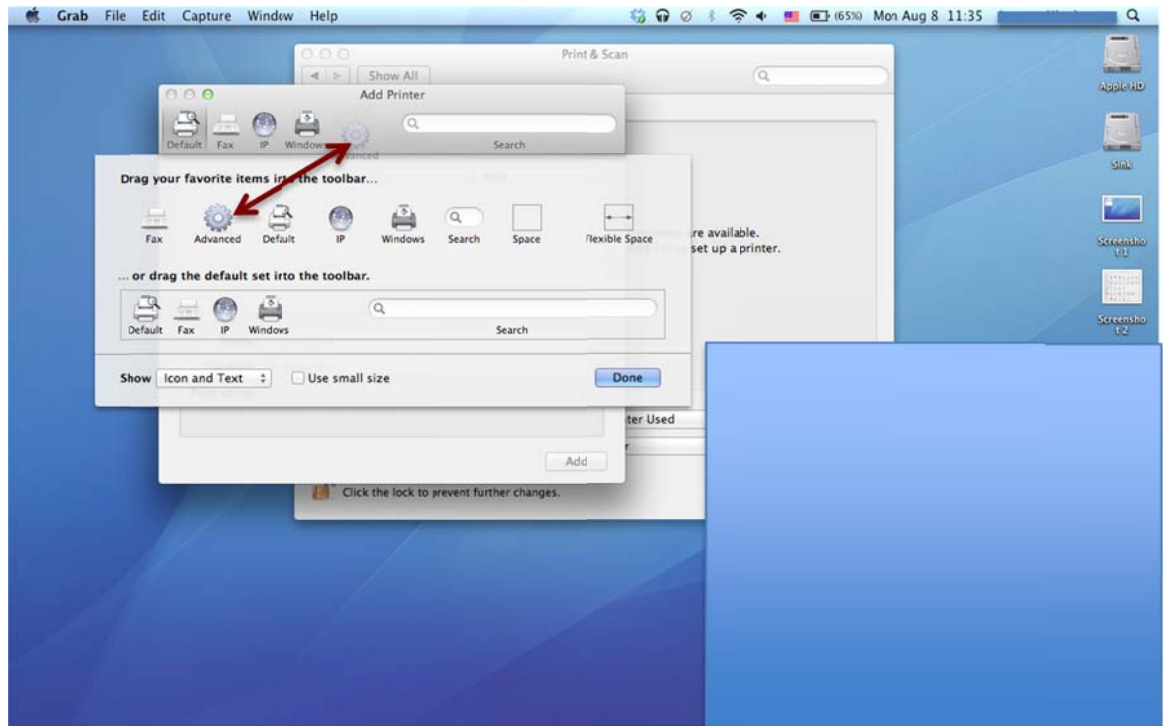
3. In the Print & Scan window select the “+”.



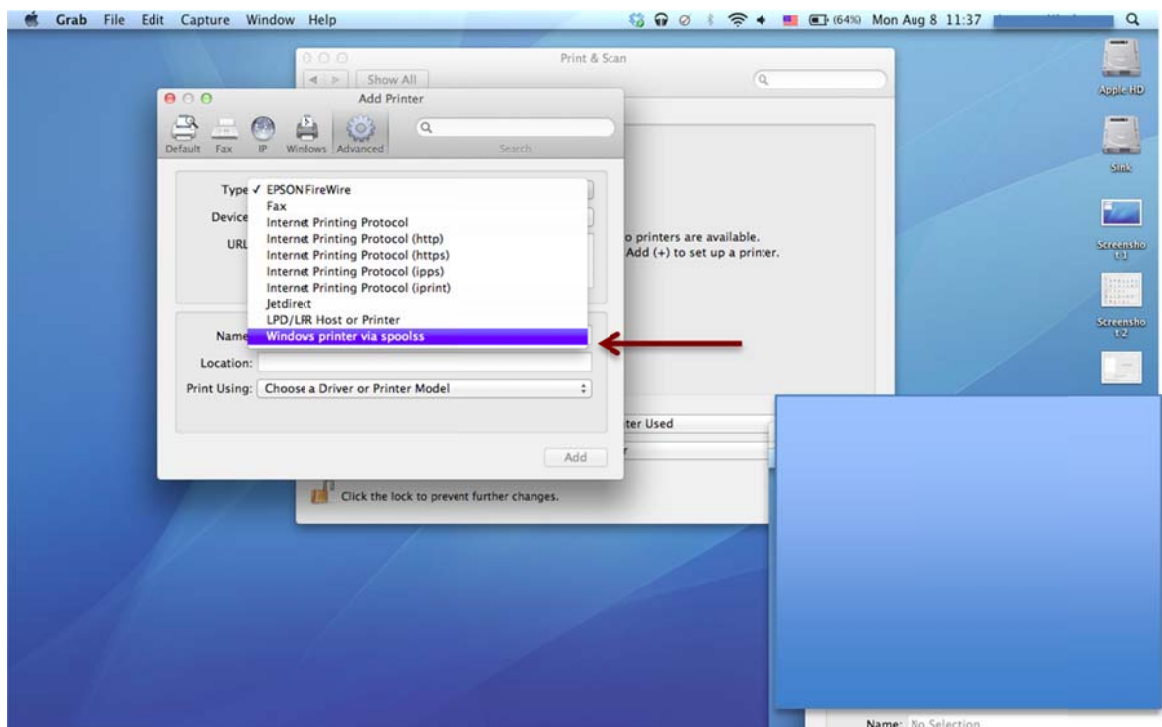
4. Press “Control” + Click between Windows and Search bar, in the menu click “Customize Toolbar”.



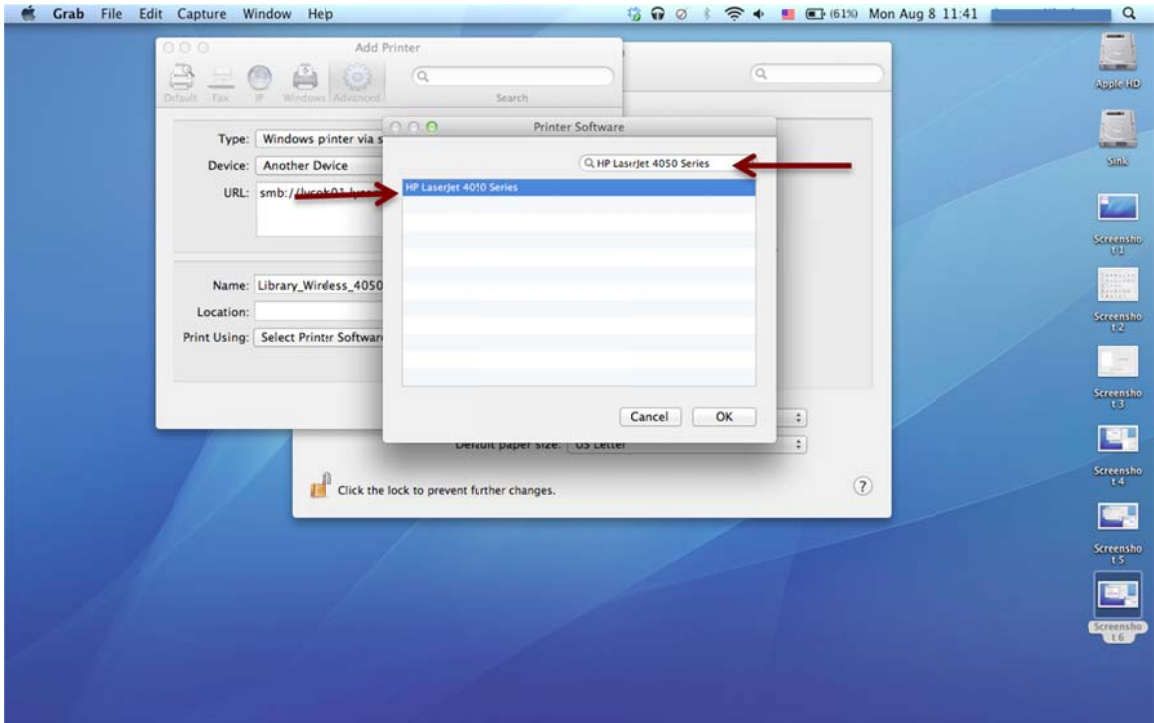
5. In the window that appears drag “Advanced” into the toolbar, then click “Done”.



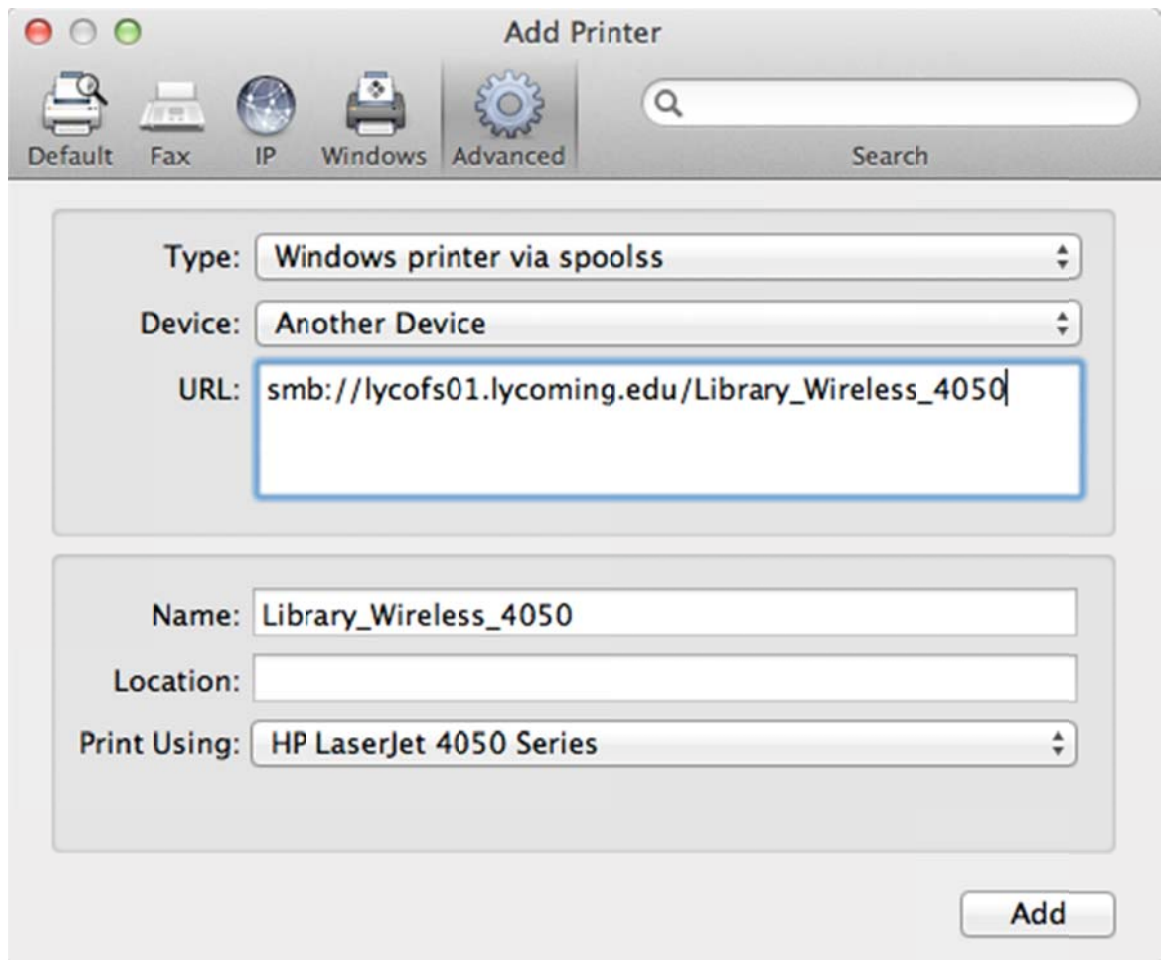
6. Click “Advanced”, then in the dropdown menu next to “Type” select “Windows printer”.



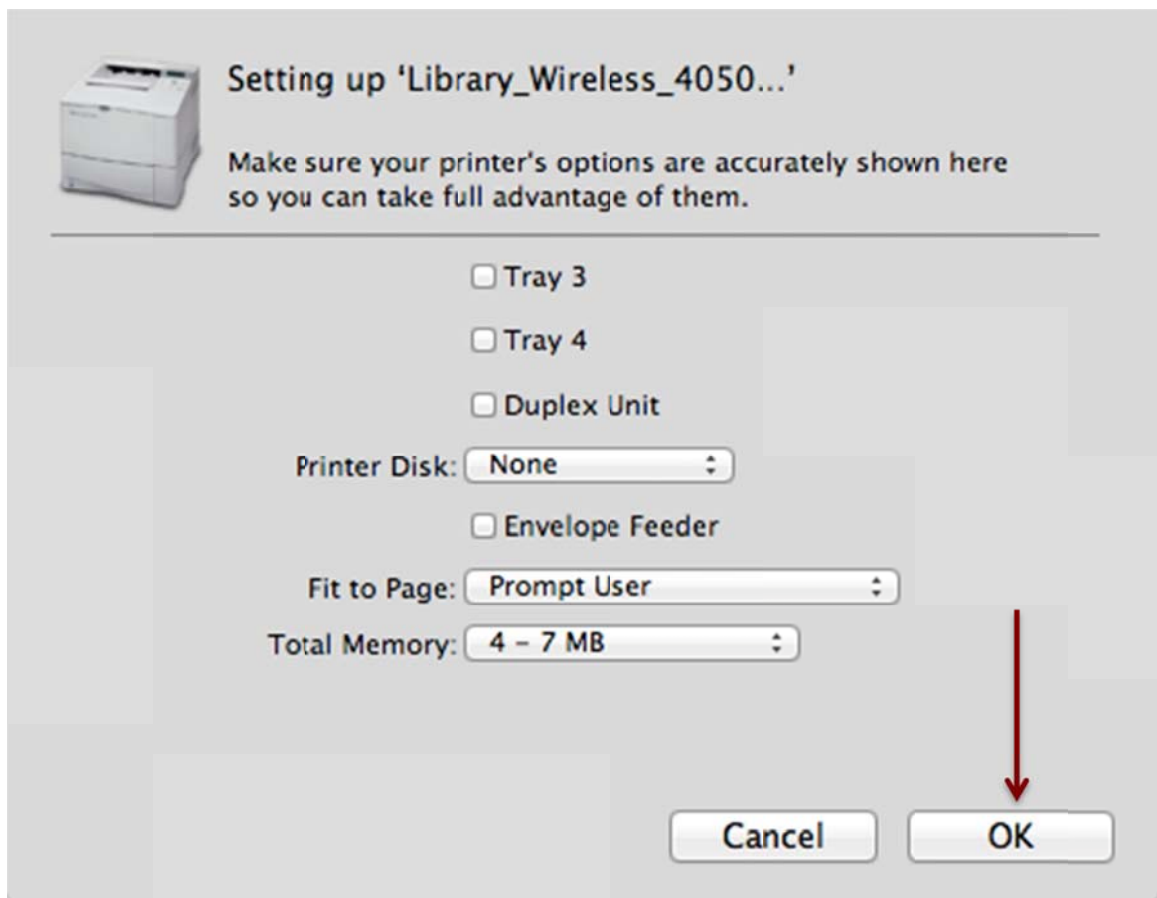
- In URL: type "smb://lycofs01.lycoming.edu/Library_Wireless_4050"
- In Print Using: Click "Select Printer Software". In search box in the window that appears, type "HP Laserjet 4050 Series". Select the item that appears and click "OK".



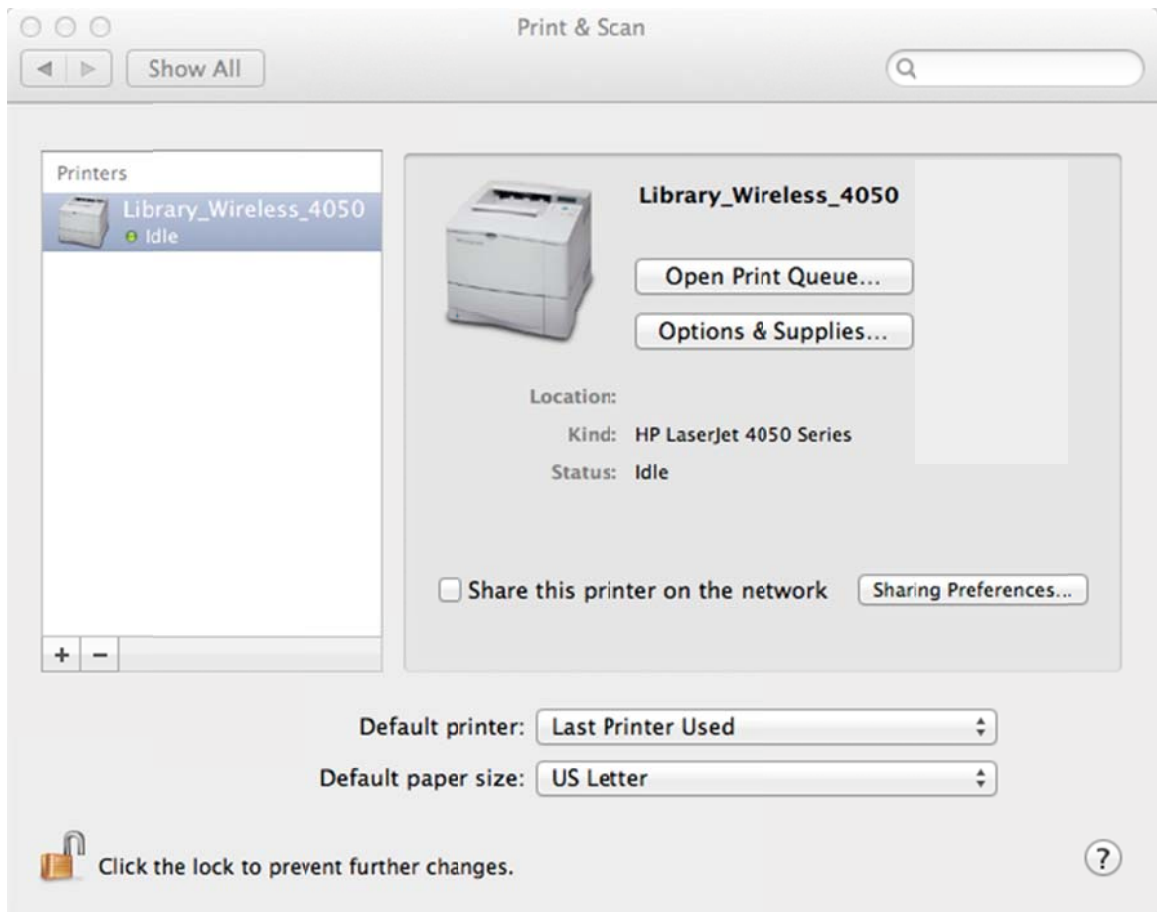
- It should appear as pictured below. Click "Add".



10. When this window appears, click "OK".



11. If the previous steps were completed correctly, it should appear as such:



12. When you decide to print, you will be prompted to log in. In the Name: field type in "lycoming\" (be sure to use the backslash, located above the return key) then your Lycoming College username and in the Password: field type your Lycoming College password.

